

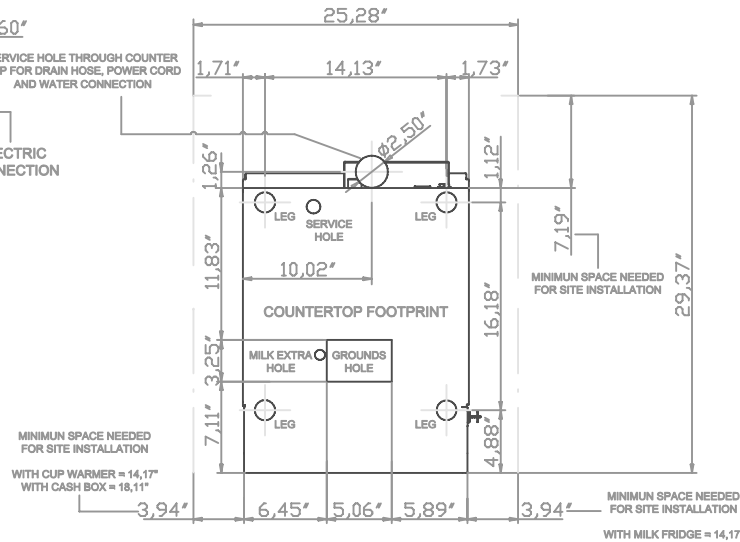
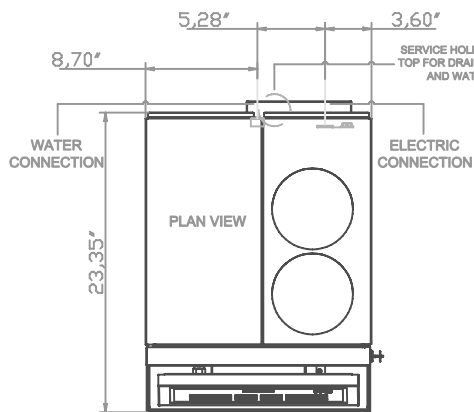
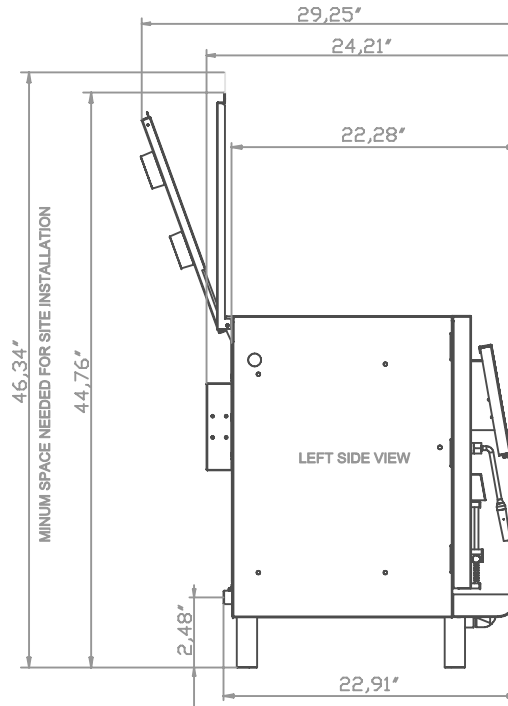
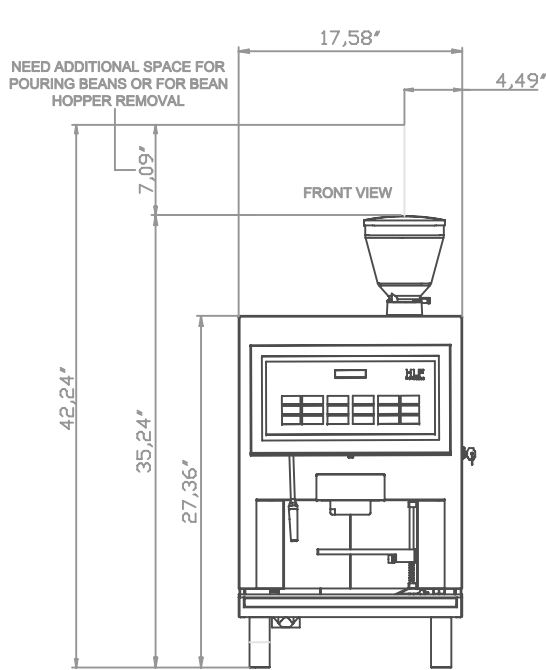
REVISIONE	DESCRIZIONE	DATA
X	X	/2012
X	X	/2012

HLF

H.L.F. S.r.l. si riserva, a termini di legge, la proprietà del presente disegno e ne vieta la riproduzione o la copia, senza sua autorizzazione scritta.

PLANNING DIAGRAM

DATA	DISegnATORE	SCALA
13/09/2012	SGAGGIO M.	1:10
DESCRIZIONE	CODICE	
HLF 4600 MCG/F - 4600/F PLANNING DIAGRAM (INCHES)	X	



Physical site requirements : model HLF 4600 MCG/F - 4600/F

HEIGHT 46,34 " INCLUDES 3,94" LEGS: IT'S POSSIBLE TO HAVE DIFFERENT LEGS HEIGHT.

Countertop space : 25,28" (Width), 29,37" (Depth), 46,34" (Height) (Machine Only);

additional 10,24" (Width) with Milk fridge on the right side;
additional 10,24" (Width) with Cup warmer on the left side;
additional 18,11" (Width) with Cash box on the left side;

A DRAIN HOSE ACCESS HOLE IN THE COUNTER TOP MAY BE REQUIRED;

Countertop must be able to support : 119 lb (Machine Only);
additional 60 lb with Milk fridge on the right side;
additional 44 lb with Cup warmer on the left side;
additional 33 lb with Cash box on the left side;

Power requirements : (FOR EU)
250 V AC, 16 AMP dedicated circuit using a SHUKO receptacle.

(FOR AU)
230 V AC, 10 AMP dedicated circuit using an AS 3112 receptacle.

(FOR US)
125 V AC, 15 AMP dedicated circuit using a NEMA 5-15 receptacle;

FRESH MILK VERSION: 125 V AC, 20 AMP dedicated circuit using a NEMA 5-20 receptacle.

(FOR UK)
250 V AC, 13 AMP dedicated circuit using a BS 1363 receptacle.

ELECTRICAL RECEPTACLE MUST BE LOCATED WITHIN 1,5 m (5 ft) OF THE MACHINE.

Plumbing requirements : Cold water source with a dedicated female 3/4 GAS fitting and an in-line shut-off valve.

Water supply pressure must be MIN 1 bar (14,5 PSI) and MAX 6 bar (87 PSI).

WATER LINE MUST BE LOCATED WITHIN 5 ft OF THE MACHINE.
If your location has a reverse osmosis system, a fresh water bypass is required.

Room temperature : cannot exceed 32 °C (90 °F).

Drain system requirements :
It's important that the drain hose has a continuous rate of fall.
Minimum rate of fall required is one inch per foot

