



28312 Industrial Blvd
Suite H
Hayward, CA 94545
wecare@gcsbrands.com
510-265-1202

Correcting 'Check Grinder' error on HLF 700 Series

Appendix: Replacing the white plastic gear.

Part #9IAMB3055

NOTE: If you're getting 'Check Grinder' errors, you should first follow the procedures described in the video.

<https://www.youtube.com/watch?v=ZvGrEmd1fhE>



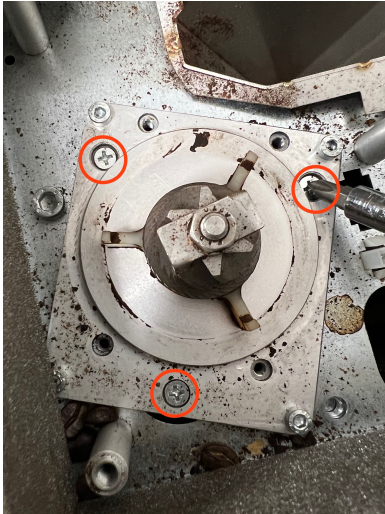
Early versions of the grinder module (those using conical blades) used a white plastic gear to connect the grinder motor to the blades.

In some cases, a jammed grinder can chew up a couple teeth on this gear allowing the motor to turn without turning the blades.

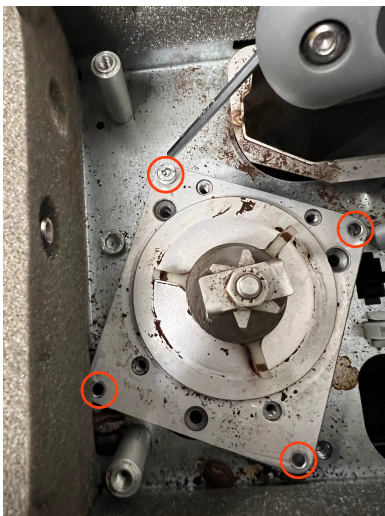


This gear is only found in the modules with conical blades.

To check or replace the gear, first follow the procedure in the video to remove the upper blade assembly.



Next, remove these three screws that hold the grinder together,



then these four allen head screws that connect the grinder motor to the module.

These are 3mm and we strongly suggest using a bit and extension to make removal and reinsertion easier.

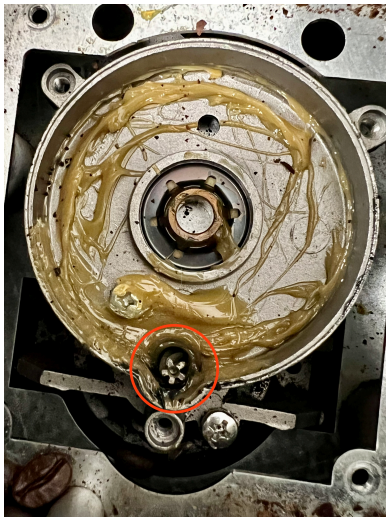


You can now lift the top of the grinders and inspect the white plastic gear.



If replacement of the gear is needed, remove the lower blade from the spindle with a 10mm socket. Note: this is a reverse thread. Turn clockwise to remove.

As you remove the nut, lock washer, blade, etc you will find bushings for the bearings attached to the shaft. Be sure to note the order and replace it all in the same order when reassembling.



Before reassembly, check for and remove any bits of plastic broken off the white gear that may be trapped in the grease - especially in the marked area.

Apply grease to the teeth of the new white plastic gear.